



Security Dongles for LabVIEW



Adds software protection, user identification and system feature control



Software Protection Dongles for LabVIEW

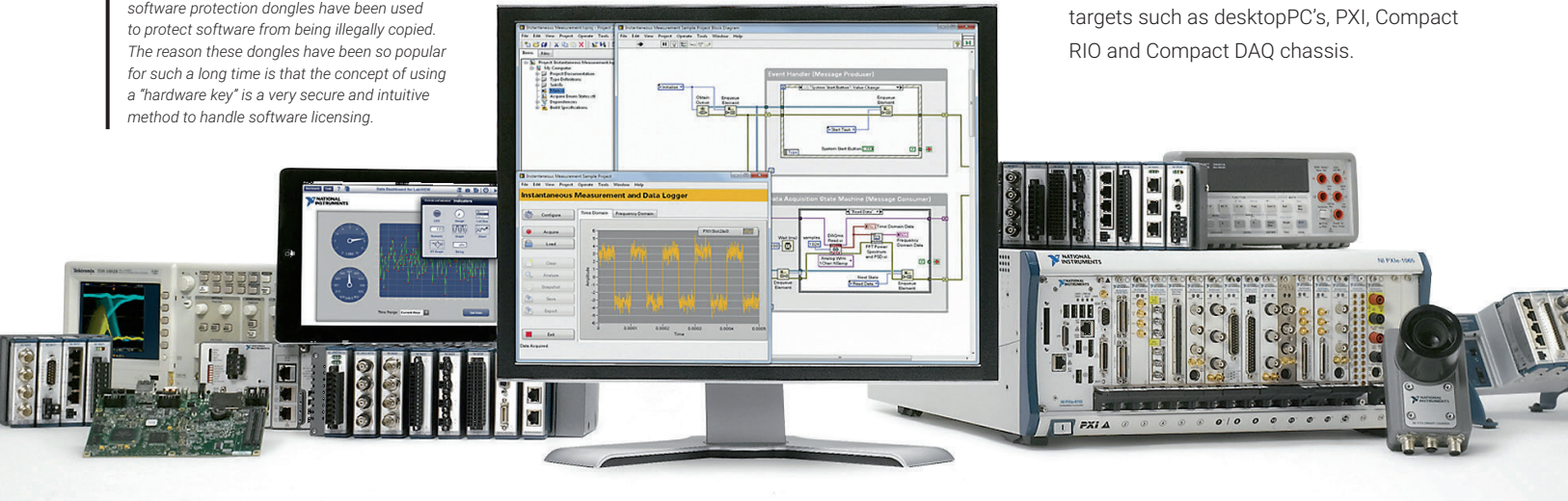
Now also LabVIEW developers can protect their applications by using WireFlow Security Dongles specifically developed for LabVIEW.

The software drivers for the WireFlow Security Dongles are developed entirely in LabVIEW, making them fully compatible with all LabVIEW platforms including LabVIEW for Windows, LabVIEW for Mac, LabVIEW Real-Time and LabVIEW FPGA.

The WireFlow Dongles may thus be used to protect all LabVIEW hardware targets such as desktopPC's, PXI, Compact RIO and Compact DAQ chassis.

SINCE LATE 1970s

software protection dongles have been used to protect software from being illegally copied. The reason these dongles have been so popular for such a long time is that the concept of using a "hardware key" is a very secure and intuitive method to handle software licensing.



Intuitive Programming Application

The Dongles are easily programmed on any Windows PC using the intuitive programming application.

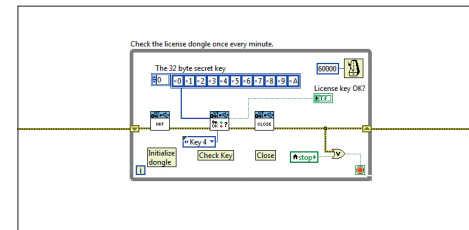
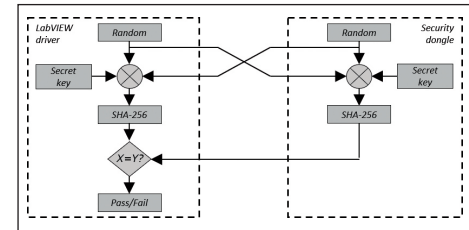
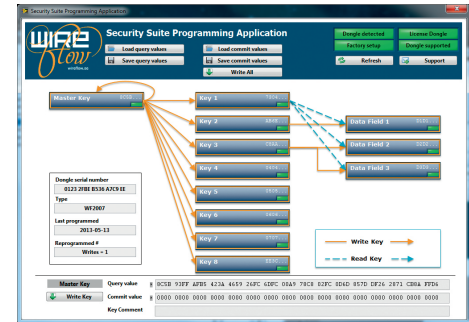
Proven security

Once the different keys are programmed into the secure memory inside the dongle, it is physically impossible to read them back again. Using the supplied LabVIEW driver, the presence of a dongle with a certain key is queried using a new random challenge each time. The key never leaves the dongle, it just sends the resulting hash back to the driver. This ensures that the dongles cannot be copied or imitated. Protection against brute force attacks is guaranteed by using industry standard SHA-256 hash algorithm with 256 bit keys. This means more possible keys than there are atoms in the sun!

Easy implementation

Despite the complexity of the underlying functionality, it is very easy to develop a license check using the supplied LabVIEW driver.

Besides doing basic license checks, the security dongles can also be used for more advanced functions such as unlocking software features, user identification, demo expiration handling etc.



WireFlow Security Suite

The **WF 2007** is a USB Security Dongle for all LabVIEWRT/FPGA targets with access to an USB port.

The **WF 2008** is a USB Security Dongle for all Windows, Mac andLinux targets with access to an USB port.

The **WF Security Suite Programming Application** is a Windowsapplication used for programming security dongles.

Check our website for
the latest addition to our Suite...

