



Traceability as a service

Production Test

Contact information
claes.thor@wireflow.se

www.wireflow.com

AB0230-010, rev A



Request Quote

Why traceability is important

Traceability is one of the most important factors in being able to provide high quality at a lower cost. Read our guideline about [Traceability](#) if you would like to know more.

What we offer

At WireFlow we use the tool [WATS](#), to gain new insights from the manufacturing data. By using WATS, you can quickly identify production yield issues, frequent test or product failures, poor test coverage or other performance problems, in real-time, directly through your web browser or mobile device.

If you already have a test system that logs local test reports, we at WireFlow can create a report handler that converts your local report into a WATS report that will be sent to the WATS cloud system.

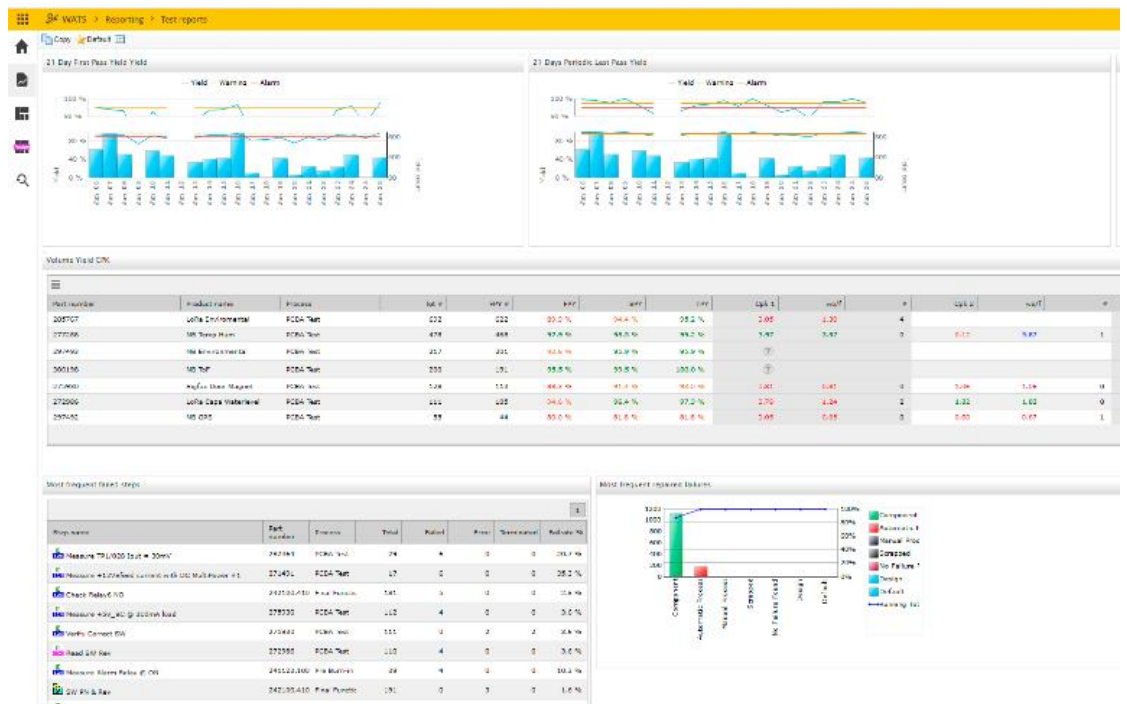
This means that you can move from poor traceability to excellent traceability at a very low cost. With traceability you also get data necessary to easier repair failing boards in production and highlight process problems.

There is no need for you to make any changes to your current test system as long as you log some test data in your system.

Lack of traceability
Costly returns
No production KPIs
Hard to find root cause



Great traceability
Input for improvements
Production KPIs
Easier to find root cause



Contact information
 claes.thor@wireflow.se

www.wireflow.com

AB0230-010, rev A